

CLEOPATRA

THE EXHIBITION

An exhibition from  NATIONAL GEOGRAPHIC

Supported by  HILMI FOUNDATION



Take your students on a
journey to Ancient Egypt.




Mysteries of
EGYPT



EXPERIENCE IT IN **IMAX**



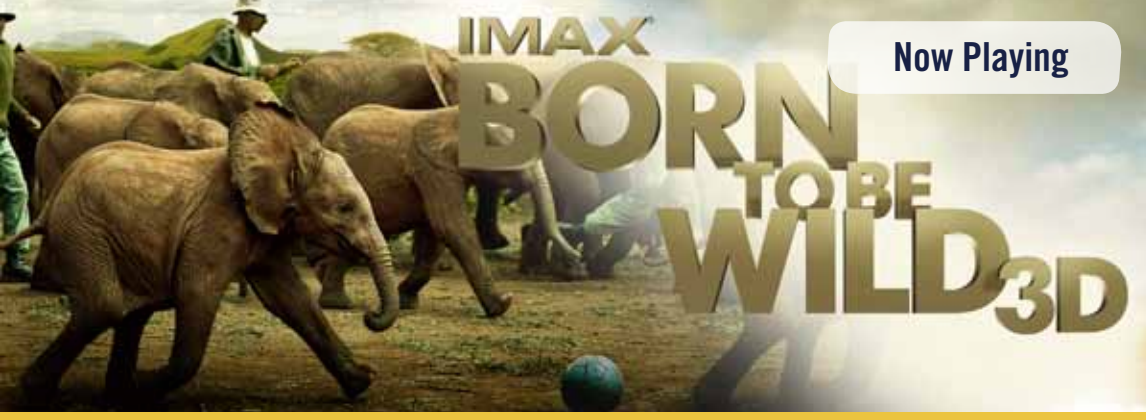
Now Playing



FLYING MONSTERS 3D

WITH DAVID ATTENBOROUGH

Now Playing



IMAX BORN TO BE WILD 3D

Opens May 23, 2012

Mysteries of EGYPT



IMAX Ticket Information

School group rate
\$4.75 per person
(minimum 15 people)
Receive one FREE ticket for every 15 tickets purchased.
Free teacher guides available!
Price for school groups pre K-12 only

Visit
californiasciencecenter.org
for current IMAX film schedule

SCIENCE COMES ALIVE ON OUR SEVEN-STORY IMAX SCREEN!

Now Playing

IMAX HUBBLE 3D

NARRATED BY LEONARDO DICAPRIO



IMAX TO THE ARCTIC 3D

Opens April 20, 2012

A MACGILLIVRAY FREEMAN FILM
FROM WARNER BROS. PICTURES AND IMAX CORPORATION

IMAX

WWW.IMAX.COM



To make a reservation, call (213) 744-2019.

For further information, please visit our website at www.californiasciencecenter.org

IMAX film schedule subject to change.

IMAX® a registered trademark of IMAX Corporation.

PROGRAMS AT THE CALIFORNIA SCIENCE CENTER

Hands-On Field Trips

Add a Hands-On Field Trip to your visit at the California Science Center! All programs are inquiry-based and aligned with state science content standards. These facilitated programs are a great way to complement your science curriculum and excite your students about science!

Visit goto.californiasciencecenter.org/groupprograms for complete program and booking information, or call (213) 744-2019.

The Big Lab – Bring Big Ideas to Life

The Big Lab is a unique, 32,000 sq. ft. space designed for rich, hands-on inquiry science activities. Roll up your sleeves and experience custom learning materials at one of our four Experiment Platforms.



PROGRAMS:

Where's the Air? (Grades K-2)
Ladybugs (Grades K-2)
Boats and Balance (Grades 3-5)
Erosion (Grades 4-6)
Roller Coasters (Grades 4-8)

SESSION INFORMATION:

Each Big Lab session lasts 75 minutes
Cost: \$8 per student per session – minimum of 15 students required per group

Discovery Lab – Where Your Imagination Soars

Discovery Lab programs take place in our cutting-edge lab classrooms. Help your students experience the wonders of science in these interactive programs.



PROGRAMS:

Ooey Gooley Slime (Grades Pre K-K)
Butterflies (Grades Pre K-K)
Cow Eye Dissection (Grades 6-8)

SESSION INFORMATION:

Each Discovery Lab session lasts 60 minutes
Cost: \$8 per student per session – minimum of 15 students required per group

SCIENCE LIVE! FREE PROGRAMS ONSITE



Daily Demonstrations

Check our daily schedule at the Information Desk to view times for live demonstrations with our Education staff. Be on the look out for our Discovery Carts throughout each gallery of the California Science Center!

Science Spectacular Shows

Show Times for the 2011-2012 School Year

Creative World Shows

Monday-Friday at 11:30 a.m.

Dive Show: Daily at 11:00 a.m. and 2:30 p.m.



EDUCATOR RESOURCES



Professional Development and Training

Participate in Science and Math workshops that are inquiry and research based and designed to promote student success! Activities are correlated to State and National Science Standards and explore curriculum connections across the disciplines. Come and explore strategies to help children succeed. Receive materials that will expand your science knowledge and teaching practices.

WORKSHOPS ARE AVAILABLE FOR TEACHERS, PARENTS AND COMMUNITY EDUCATORS. CHECK OUR WEBSITE FOR A FULL LISTING OF PROGRAMS.

SAVE THE DATE FOR THESE UPCOMING WORKSHOPS:

February 4, 2012
GEMS Spring Science Academy

March 16, 17, 2012
Brain and Learning Symposium

DON'T MISS MAKE AND TAKE SATURDAYS IN THE KRESA EDUCATOR RESOURCE HALL

Throughout the year the Kresa Educator Resource Hall invites everyone interested in science education to drop by and try out a variety of engaging science and math activities relating to different themes.

Learn how to do fun, simple to do activities using inexpensive, easy to find materials.

For more information call (213) 744-7455 or visit goto.californiasciencecenter.org/teachers.

SCIENCE ON TOUR – SCHOOL ASSEMBLIES

Bringing Science to Your Community!

Bring the wonder and excitement of the California Science Center to your school with our interactive live theater programs! Assemblies last 45 minutes and support California State Science Content standards.

SCHOLARSHIPS AND DISCOUNTS AVAILABLE FOR QUALIFYING SCHOOLS IN LOS ANGELES COUNTY.

Desert Dome Grades K-5

Immerse yourself into the sights, sounds and smells of the Mojave Desert as students step inside our mobile inflatable dome and learn about ecology, adaptation and desert habitats.



SuperKids Academy Grades K - 5



Join the SuperKids and help to defeat the evil BLAHs, while learning the importance of eating healthy foods and exercising regularly in this inspired show featuring life-sized puppets.

Call (213) 744-7444, e-mail scienceontour@cscmail.org or visit goto.californiasciencecenter.org/scienceontour to book a performance for your school or special event.

Ecosystems

Explore the varied ecosystems of land and sea, and discover how the physical and living worlds are connected and shaped by the same fundamental ecological principles. Ecosystems invites you to explore environments that range from the most ordinary and domestic to the most remote and inhospitable.

Free Admission!



Photo Credits: © TRACIE SPENCE PHOTOGRAPHY

CLEOPATRA

THE EXHIBITION

An exhibition from  NATIONAL GEOGRAPHIC

Supported by  FOUNDATION



MAY 23 - DECEMBER 31, 2012

Experience Ancient Egypt during the time of Cleopatra, who lived between 69 and 30 BC. Through some of the greatest underwater archeological finds in modern day history, the exhibition provides a window into the life of Cleopatra and that of her contemporaries.

For more information please visit our website at www.californiasciencecenter.org


Mysteries of
EGYPT



Enhance your experience,
don't miss *Mysteries of Egypt* in IMAX!

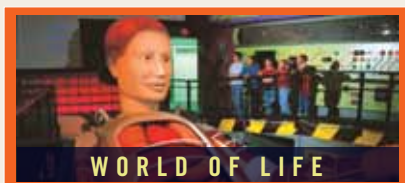


1001 Inventions: Discover the Golden Age of Muslim Civilization is an international traveling exhibit exploring the scientific achievements of the Muslim civilization during the 7th-17th centuries, and how they contributed to our modern world.

Exhibit extended until March 11, 2012

For more information please visit our website at www.californiasciencecenter.org

EXPLORE THE EXCITING WORLD OF THE CALIFORNIA SCIENCE CENTER!





MAKE A FIELD TRIP RESERVATION!

Call

Call (213) 744-2019 from 8 a.m.–5 p.m. weekdays and 8:30 a.m.–5 p.m. weekends. Please have available at least two alternative visit dates.

OR

Send a Form

Type the following URL in your web browser “<http://goto.californiasciencecenter.org/groupform>” Print and fax the completed form to (213) 744-2650. You also may send the form to:

**Reservations Office
California Science Center
700 Exposition Park Drive
Los Angeles, CA 90037**

Groups of 15 or more must make a reservation at least three weeks in advance. Admission cannot be guaranteed for groups without a reservation.

Fees (Price for school groups – pre K-12 only)

IMAX film—\$4.75/person

Cleopatra Exhibit Only—\$9.75

Combo (IMAX & Cleopatra Exhibit)—\$13.00

Receive one FREE ticket for every 15 tickets purchased. *Valid for student or adult chaparones.*

(Price for Adult Chaparones)

Cleopatra Exhibit Only—\$15.50

Combo (IMAX & Cleopatra Exhibit)—\$20.75

Education Field Trip Program—\$8/student

Field Trip—\$25 booking fee*

for groups of 15 or more

(Booking fee is waived for groups seeing an IMAX film, Special Exhibit or participating in an Education Field Trip Program. A deposit is required 30 days prior to date of visit to hold your date.) *Non-refundable

Hours

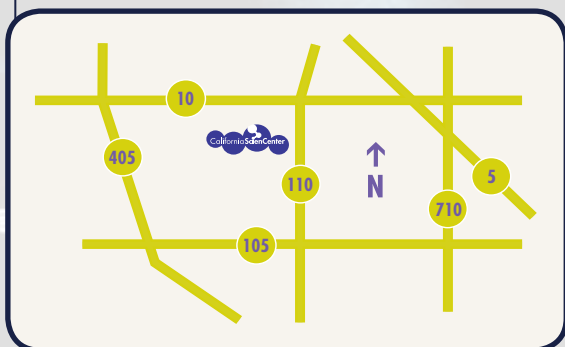
The California Science Center is open from 10 a.m.–5 p.m. daily except Thanksgiving, Christmas and New Year’s days.

IMAX showtimes vary.

Location

The California Science Center is located three miles south of downtown Los Angeles in Exposition Park near the Coliseum and USC.

Visit www.californiasciencecenter.org for detailed directions.



FREE field trip transportation provided by **Metro** to and from the Science Center! More info at <http://goto.californiasciencecenter.org/FreeMetro>

FEDCO Teacher Grants

If your school is located in one of the districts listed below you may be eligible to receive a FEDCO grant to help underwrite the cost of your field trip to the Science Center. For more information visit—

<http://goto.californiasciencecenter.org/FedcoGrant>

LAUSD, ABC/Cerritos, Culver City, Norwalk-La Mirada or Pasadena Unified.

FOR RESERVATION INFORMATION GO TO:

www.californiasciencecenter.org and click on “Education” > “School & Group Programs” > “General Field Trip Information” or call (213) 744-2019.

The California Science Center is a partnership between the State of California and the not-for-profit California Science Center Foundation.



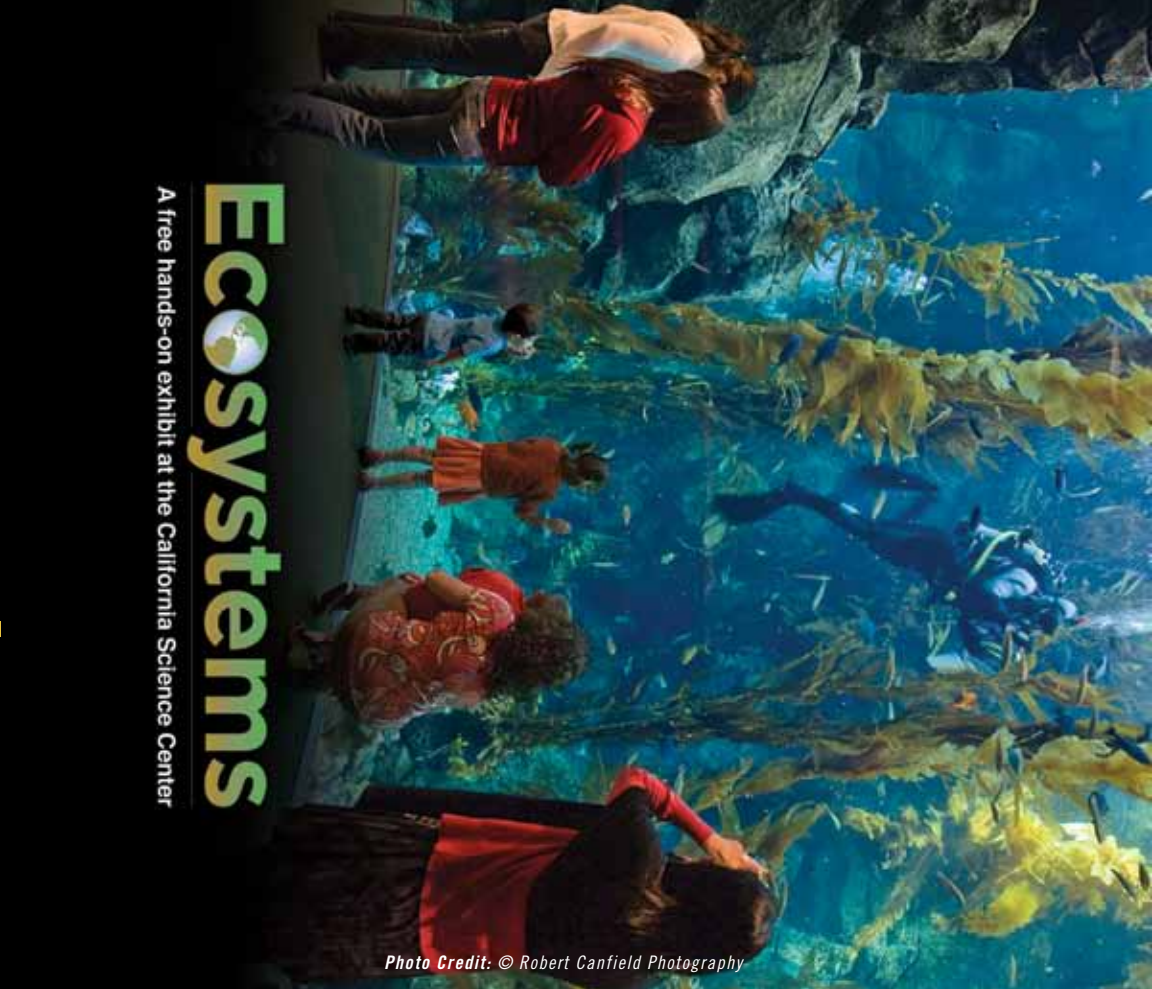


Photo Credit: © Robert Canfield Photography

Ecosystems

A free hands-on exhibit at the California Science Center



700 Exposition Park Drive
Los Angeles, CA 90037

www.californiasciencecenter.org

Non-Profit Org.
U.S. Postage
PAID
Los Angeles, CA
Permit #27171