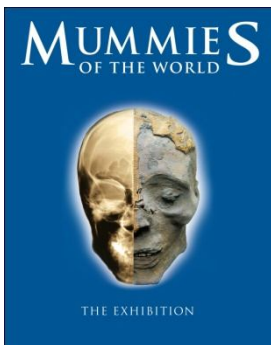


# MUMMIES OF THE WORLD

***Mummies of the World* Exhibition Commemorates Dia de los Muertos  
Observance with Special Display at the California Science Center,  
November 1 & 2**

*Public Invited to Bring Family Photos to Become Part of Dia de los Muertos Display*



LOS ANGELES – The *Mummies of the World* exhibition, which includes mummies and related artifacts from around the world, including South America, will offer a unique experience for guests at the California Science Center during *Dia de los Muertos* (Day of the Dead), November 1 & 2. A special *Dia de los Muertos* display will feature the traditions and culture of the indigenous people of Latin America. The public is invited to bring non-returnable photographs of departed loved ones that will become part of the display which is open 10 a.m. to 5 p.m. both days.

Despite the sound of the name, *Dia de los Muertos* is a festive, centuries-old holiday rooted in Mexican tradition, predating the arrival of the Spanish to the Americas. The holiday memorializes the lives of family and loved ones who have gone before us. In this custom, it is important to maintain good relations with the dead because it is believed it is they who intercede and bring good fortune to the living. The display will feature traditional Mexican folk art, artifacts, flowers, *pan de muerto* (“bread of the dead”), and photos of the departed. Guests will also find a *libro de recuerdos* (“memory book”) where they may leave heart-felt messages for the dead.

“*Mummies of the World* bridges the gap between the past and present through science, which increases our knowledge of the historical and cultural record around the world. *Dia de los Muertos* bridges the past and present in a very different way through culture and family traditions,” said William Harris, Senior Vice President of Development and Marketing, California Science Center Foundation.

Photographs donated for the *Dia de los Muertos* display should be small to mid-sized, placed in a self-standing frame and only feature the departed loved-one. Photos and frames will not be returned.

The *Dia de los Muertos* display will be available for free public viewing November 1-2, 2010. To see the *Mummies of the World* exhibition, tickets are required and can be purchased in advance at [www.californiasciencecenter.org](http://www.californiasciencecenter.org). For more information, please visit [www.mummiesoftheworld.com](http://www.mummiesoftheworld.com).

***Mummies of the World*** premiered its limited three year engagement in July of 2010 at the California Science Center in Los Angeles, California. The exhibition is currently in its final weeks, open daily from 10 a.m. to 5 p.m. *Mummies of the World* makes its Midwest debut at the Milwaukee Public Museum on December 17, 2010.

**American Exhibitions, Inc.** is one of the leading exhibition producers in the United States, specializing in world-class touring exhibitions for science centers and museums. It is a longstanding member of the Association of Science-Technology Centers (ASTC) and the American Association of Museums (AAM). <http://www.americanexhibitions.com>

**Reiss-Engelhorn Museums**, an internationally acclaimed complex in Mannheim, Germany, has been one of the major venues for exhibitions in Europe in the realms of archeology and world cultures. The museum houses a collection of 1.2 million objects in more than 300,000 square feet of exhibition space. <http://www.rem-mannheim.de/>

The **California Science Center** is a dynamic destination where families, adults and children can explore the wonders of science through interactive exhibits, live demonstrations, innovative programs and awe-inspiring films. Its mission is as follows: "We aspire to stimulate curiosity and inspire science learning in everyone by creating fun, memorable experiences, because we value science as an indispensable tool for understanding our world, accessibility and inclusiveness, and enriching people's lives."

The **California Science Center** and **IMAX Theater** are located in historic Exposition Park just west of the Harbor (110) Freeway at 700 Exposition Park Drive. The Science Center is open daily from 10:00 a.m. – 5:00 pm. Please check the Science Center web site for schedule updates. Tickets for *Mummies of the World* are currently on sale. Guests are encouraged to buy their tickets online at [www.californiasciencecenter.org](http://www.californiasciencecenter.org) to reserve an entry date & time. The exhibit's special group information number is (213) 744-2019. *Mummies of the World* admission prices are \$19.50 for adults 18-59, \$16.50 for youth 13 to 17, students with I.D. & seniors 60+, and \$12.50 for children 4 - 12. Member rates are \$12.50 for adults, \$11.50 for youth 13 to 17, students with I.D. & seniors 60+, and \$10.50 for children 4-12. *Mummies of the World* and IMAX combination ticket prices are \$25.75 for adults 18-59, \$21.50 for youth 13-17, students with I.D. and seniors 60+, and \$16.50 for children 4-12. Special rates for schools and other groups of 15 and over apply. Children under the age of 13 must be accompanied by a responsible adult. Admission to all other Science Center exhibits is free. More information is also available at [www.californiasciencecenter.org](http://www.californiasciencecenter.org) or [www.mummiesoftheworld.com](http://www.mummiesoftheworld.com).

Media Contacts:

**Spotlight LA**

Anthony Montoya

(909) 212-4584

[montoyacocm@netzero.net](mailto:montoyacocm@netzero.net)

**California Science Center**

Shell Amega/Paula Wagner

(213) 744-7446

[samega@cscmail.org](mailto:samega@cscmail.org)

[pwagner@cscmail.org](mailto:pwagner@cscmail.org)