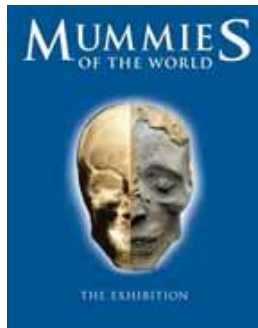


MUMMIES OF THE WORLD



MUMMIES OF THE WORLD EXHIBITION MAKES WORLD PREMIERE IN LOS ANGELES JULY 1, 2010

**American Exhibitions, Inc. Brings the Largest-Ever Exhibition of Mummies
to the California Science Center for a Limited Time**

LOS ANGELES, April 29, 2010 — A 6,420-year-old child mummy from Peru, one the oldest child mummies ever discovered, joins an astonishing collection of mummies and related artifacts in the extraordinary exhibition *Mummies of the World*, which makes its world premiere at the California Science Center in Los Angeles on July 1, 2010.

Mummies of the World is the largest exhibition ever assembled of mummies and related artifacts, featuring a never-before-seen collection of 150 real human and animal mummies and objects from South America, Europe, Asia, Oceania, and Egypt. Showcasing state-of-the-art science tools and techniques, this groundbreaking exhibition bridges the gap between past and present, showing how science can shed light on the historical and cultural record around the world. It also demonstrates that mummification – both through natural processes and intentional practices – has taken place all over the globe, from the hot desert sands of South America to remote European moors and bogs.

The treasures presented in *Mummies of the World* include one of the oldest mummy infants ever discovered; a mummified family; a German nobleman discovered in a family crypt; and Egyptian animal mummies, intentionally preserved to accompany royals for eternity.

- **The Detmold Child** is a Peruvian child mummy in a remarkable state of preservation, radiocarbon dated to 4504–4457 B.C. – about 3,000 years before the birth of King Tut. A recent CT scan investigation reveals details about the child's age, health and cause of death. It is on loan from the Lippisches Landesmuseum in Detmold, Germany.
- **The Orlovits family** was part of a group of 18th-century mummies discovered in a long-forgotten church crypt in Vác, Hungary in 1994. Michael and Veronica Orlovits and their son Johannes were among those preserved by the cool, dry air and oil from the pine boards used to build their coffins. Extensive research including DNA analysis offers answers about their



www.mummiesoftheworld.com

conditions and cause of death. They are on loan from the Hungarian Natural History Museum, Budapest.

- **Baron von Holz** is a 17th-century nobleman believed to have died in or near Sommersdorf, Germany during the Thirty Years' War (1618–1648). He was discovered in the family crypt of the von Crailsheim family's late 14th-century castle, still wearing his boots. CT scans revealed clues about his anatomy, age, and approximate date of birth and death. **Baroness Schenck von Geiern**, a von Crailsheim ancestor, also was found in the family crypt. Loaned by Dr. Manfred Baron von Crailsheim, Sommersdorf.
- **Egyptian animal mummies** in this exhibition include an **Egyptian cat mummy** that is elaborately wrapped in painted linen bandaging, holding fascinating clues to life and death in ancient Egypt. The Egyptian cat mummies in this exhibition date to the Ptolemaic period, and show how Egyptian cats were sometimes intentionally embalmed in a lengthy process using salt and various resins. These mummies are on loan from various museums in Germany.

"*Mummies of the World* offers an incredible opportunity to explore the lives and cultures of people from around the world," says Marc Corwin, president of American Exhibitions, Inc. "Human beings have a powerful desire to learn about our past and to identify with our common history. Using technology and the tools of modern forensic science to study these rare treasures adds an even more exciting layer of discovery."

The concept began with the German Mummy Project's re-discovery of 20 specimens within the Reiss-Engelhorn Museums of Mannheim, Germany in 2004. A consortium of mummy researchers used DNA analysis, magnetic resonance imaging (MRI), computer tomography (CT), radiocarbon dating and mass spectrometry to learn more, and engaged the cooperation of 21 world-renowned museums, organizations and collections in seven countries to make this innovative exhibition possible.

As a result, *Mummies of the World* is a fascinating mix of old and new, including engaging interactive multimedia exhibits that illustrate how current science tools enable us to study mummies in new and non-invasive ways, allowing unprecedented insights to past cultures and civilizations.

"This exhibition represents an extraordinary blend of science and history – a great fit for the California Science Center," says Jeffrey Rudolph, President of the California Science Center. "It's a great example of how cutting-edge, hands-on science can give us a better understanding of both the past and the present, and of how nature and culture have come together all over the world. We're excited to be the home of this world premiere, and for Los Angeles audiences to be the first to see it."

The exhibition was prepared in accordance with all recommendations of the International Council of Museums' (ICOM) code of ethics. The participating organizations include: Ägyptisches Museum, Bonn, Germany; Archäologisches Landesmuseum, Schleswig, Germany; The Deutsches Museum, Munich, Germany; The Drents Museum, Assen, Netherlands; Geologisch-Palaeontologisches Institut und Museum, Münster, Germany; Hungarian Natural History Museum, Budapest, Hungary; Institute for Egyptology, Ruprecht-Karls University, Heidelberg, Germany; Lippisches Landesmuseum, Detmold, Germany; Musées Jurassien, Delémont, Switzerland; The Naturhistorisches Museum, Basel, Switzerland; Naturhistorisches Museum, Nürnberg, Germany; Naturkundemuseum, Bozen, Italy; Naturkundemuseum, Kassel, Germany; Philipps-Universität Marburg, Marburg, Germany; Reiss-Engelhorn Museums, Mannheim, Germany; Staatliches Naturhistorisches Museum, Braunschweig, Germany; Senckenberg Museum, Frankfurt, Germany; Merck KGaA, Darmstadt, Germany; and the private collections of Mr. Thomas Kuppels, Bremen, Germany; Eve-Maria Zimmermann, Teneriffa, San Miguel de Abona; and Dr. Manfred Baron von Crailsheim, Sommersdorf Castle, Ansbach, Germany.

More information about the exhibition is available online: www.mummiesoftheworld.com.

To enhance the guest experience during the run of *Mummies of the World*, the Science Center IMAX Theater will be featuring *Mummies 3D: Secrets of the Pharaohs*. Combo tickets for any of the IMAX films and *Mummies of the World* are available.

American Exhibitions, Inc. produces world-class touring exhibitions for science centers and museums that excite, educate and engage visitors. As a longstanding member of the Association of Science-Technology Centers (ASTC) and the American Association of Museums (AAM), American Exhibitions, Inc. is one of the leading exhibit producers in the United States. <http://www.americanexhibitions.com>

Reiss-Engelhorn Museums, an internationally acclaimed complex in Mannheim, Germany, has been one of the major venues for exhibitions in Europe in the realms of archeology and world cultures. With a collection that began in the early 1700s, the museum houses more than 1.2 million objects in its collection, comprising over 300,000 square feet of exhibition space. <http://www.rem-mannheim.de/>

The **California Science Center** is a dynamic destination where families, adults and children can explore the wonders of science through interactive exhibits, live demonstrations, innovative programs and awe-inspiring films. Its mission is as follows: "We aspire to stimulate curiosity and inspire science learning in everyone by creating fun, memorable experiences, because we value science as an indispensable tool for understanding our world, accessibility and inclusiveness, and enriching people's lives."

The **California Science Center** and **IMAX Theater** are located in historic Exposition Park just west of the Harbor (110) Freeway at 700 Exposition Park Drive. The Science Center is open daily from 10:00 a.m. – 5:00 pm. Please check the Science Center website for schedule updates. Tickets for *Mummies of the World* are currently on sale. Guests are encouraged to buy their tickets online at www.californiasciencecenter.org to reserve an entry date & time. The exhibit's special group information number is (213) 744-2019. *Mummies of the World* admission prices are \$19.50 for adults 18-59, \$16.50 for youth 13 to 17, students with I.D. & seniors 60+, and \$12.50 for children 4 - 12. Member rates are \$12.50 for adults, \$11.50 for youth 13 to 17, students with I.D. & seniors 60+, and \$10.50 for children 4-12. *Mummies of the World* and IMAX combination ticket prices are \$25.75 for adults 18-59, \$21.50 for youth 13-17, students with I.D. and seniors 60+, and \$16.50 for children 4-12. Special rates for schools and other groups of 15 and over apply. Children under the age of 13 must be accompanied by a responsible adult. Admission to all other Science Center exhibits is free. More information is also available at www.californiasciencecenter.org or www.mummiesoftheworld.com.

Media Contacts:

SWPR Group

Lisa Porter/Bonnie Winings/Barry Smith/Amy Ulrich
(818) 760-7131

lporter@swprgroup.com

bwinings@swprgroup.com

bsmith@swprgroup.com

aulrich@swprgroup.com

California Science Center

Shell Amega/Paula Wagner/Kristina Kurasz
(213) 744-7446

samega@cscmail.org

pwagner@cscmail.org

kkurasz@cscmail.org

###